




-  One-stop shop
  -  On-time delivery
  -  Independent technical advice
- 

# Cable Accessories





One-stop shop



On-time delivery



Independent technical advice

## Cable protection and sleeves

CABLE PROTECTION AND SLEEVES		
Picture	Ordering code	Description
	PMA-12B	Corrugated pipe diam. 12mm
	PMA-14B	Corrugated pipe diam. 14mm
	SPSCH15CON	Spiral wrapping, Black, per meter (packaging 20m)
	BR-PET20	Braided PET cable sleeve Pliosil – min. diam. 20 mm
	BR-PET30	Braided PET cable sleeve Pliosil – min. diam. 30 mm
	MOF-7.5/12-BL	Elastic blue sleeve
	MOF-7.5/12-RED	Elastic red sleeve
	MOF-7.5/12-ZW	Elastic black sleeve
	KY3	Sleeve expander tool - Type KY3
	HSB500-RED-100m	Heat-shrink tubing 12,7 mm / 6,4 mm – Red – per meter
	HSB750-RED-50m	Heat-shrink tubing 19 mm / 9,5 mm – Red – per meter
	HSB500-BLUE-100m	Heat-shrink tubing 12,7 mm / 6,4 mm – Blue – per meter
	HSB750-BLUE-50m	Heat-shrink tubing 19 mm / 9,5 mm – Blue – per meter
	HSB500-BLACK-100m	Heat-shrink tubing 12,7 mm / 6,4 mm – Black – per meter
	HSB750-BLACK-50m	Heat-shrink tubing 19 mm / 9,5 mm – Black – per meter



One-stop shop



On-time delivery




Independent technical advice

---

## Cable clamps for battery tray

---

CABLE CLAMPS		
Picture	Ordering code	Description
	ZGEL25	Cable clamp for battery tray – 25 mm <sup>2</sup>
	ZGEL35	Cable clamp for battery tray – 35 mm <sup>2</sup>
	ZGEL50	Cable clamp for battery tray – 50 mm <sup>2</sup>
	ZGEL70	Cable clamp for battery tray – 70 mm <sup>2</sup>
	ZGEL95	Cable clamp for battery tray – 95 mm <sup>2</sup>



One-stop shop



On-time delivery





Independent technical advice

---

## Feed-through sealing components

---

POLYAMIDE CABLE GLANDS	
Picture	Description
	<ul style="list-style-type: none"><li>- Material: PA 6</li><li>- Sealing ring: TPV</li><li>- Available in white (light grey), grey and black</li><li>- Temperature: -20 to 100°C</li><li>- conform N62444</li><li>- available in sizes PG7 – PG48</li><li>- available in sizes M12 – M63</li><li>- counter nut optional</li></ul>

METAL CABLE GLANDS	
Picture	Description
	<ul style="list-style-type: none"><li>- Material: nickel plated brass</li><li>- Sealing ring: TPV</li><li>- O-ring: NBR</li><li>- Temperature: -20 to 100°C</li><li>- IP68</li><li>- conform N62444</li><li>- available in sizes PG7 – PG48</li><li>- available in sizes M12 – M63</li><li>- counter nut optional</li></ul>



One-stop shop



On-time delivery



Independent technical advice

### Ordering codes for cable glands

Example:

**CGPA-M20-WHT**

CG: Cable Gland

Material:

PA – Polyamide

ME – Metal (nickel plated brass)

Size:

PG7 – PG9 – PG11 – PG13,5 – PG16 – PG21 – PG29 – PG36 – PG42 – PG48

M12 – M16 – M20 – M25 – M32 – M40 – M50 – M63

Color (only for Polyamide cable glands):

WHT – White (light grey)

GREY – Grey

BLK – Black



One-stop shop



On-time delivery

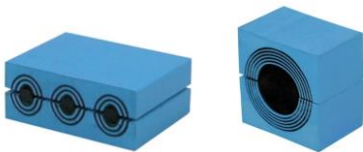


Independent technical advice

## MODULAR FEED-THROUGH SEALING COMPONENTS



### Pictures



### Description

- Lightweight composite frame cable seals.
- Fits directly into standard openings.
- The seals are available in six sizes.
- For cable capacities from 4 to 32 cables.
- IP 66/67 protection.
- For cables with an outer diameter of 3,5 – 34,5 mm (0.138 – 1.358 inch)
- Versions available for FL21 recess and opening for 24-pin connector
- Easy install
- Mounting type: bolted
- Corrosion resistant
- Suitable for cables with connector
- Also other variants available

\*For ordering, please contact us



One-stop shop






On-time delivery



Independent technical advice

## Polyamide cable ties

CABLE TIES		
Picture	Ordering code	Description
	PSB120WH	Polyamide cable tie – CV 120 – 100 pieces – White
	PSB150WH	Polyamide cable tie – CV 150 – 100 pieces – White
	PSB200WH	Polyamide cable tie – CV 200 – 100 pieces – White
	PSB250WH	Polyamide cable tie – CV 250 – 100 pieces – White
	PSB140ZW	Polyamide cable tie – CVW 140 – 1000 pieces – Black
	PSB150ZW	Polyamide cable tie – CVW 150 – 1000 pieces – Black
	PSB200ZW	Polyamide cable tie – CVW 200 – 100 pieces – Black
	PSBTG7	Tool for tie wrap 1 - 5,5mm